

Our Role

The Careers & Enterprise Company is an employer-led organisation that has been set up to inspire and prepare young people for the fast-changing world of work. We aim to help motivate young people, support them in making informed choices about their future and help them achieve against those choices. Our role is to act as a catalyst in the fragmented landscape of careers and enterprise, supporting programmes that work, filling gaps in provision and ensuring coverage across the country.

Our vision is to become the one stop shop schools, colleges, employers and providers come to if they want to invest efficiently and effectively in preparing young people for the future. Visit our website to find out more: www.careersandenterprise.co.uk

Our Work

1. Build a national network

We are building an **Enterprise Adviser Network** in collaboration with Local Enterprise Partnerships that connects schools and colleges to employers.

2. Back proven ideas

We run grant making **Investment Funds** which scale up proven careers and enterprise programmes into geographic areas of need.

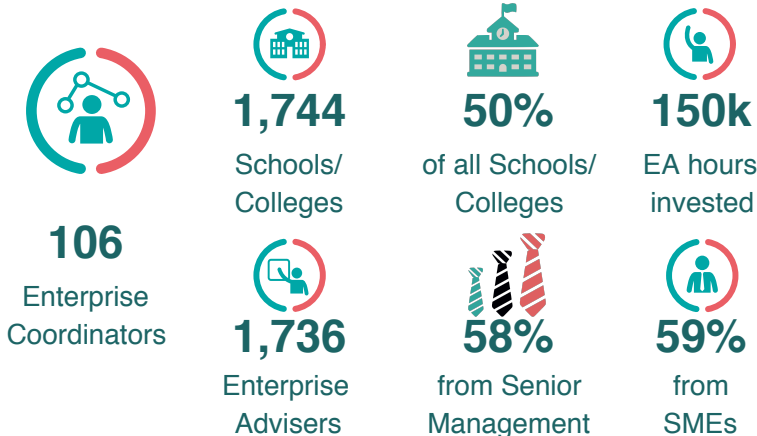
3. Find out what works

We conduct and commission **Research** to underpin and evaluate our work, identifying areas of need and understanding 'what works' in careers & enterprise.

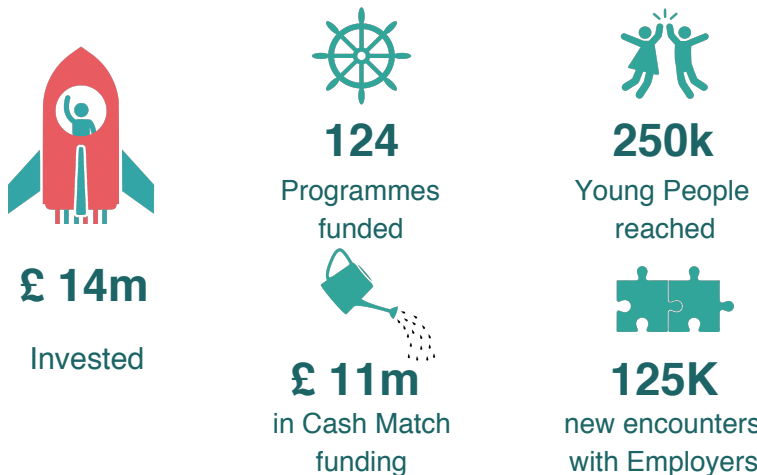
Our Core Principles

- ✓ Work nationally, deliver locally
- ✓ Build on what works
- ✓ Test, learn and adapt
- ✓ Enable and convene the best programmes

1. Build a National Network

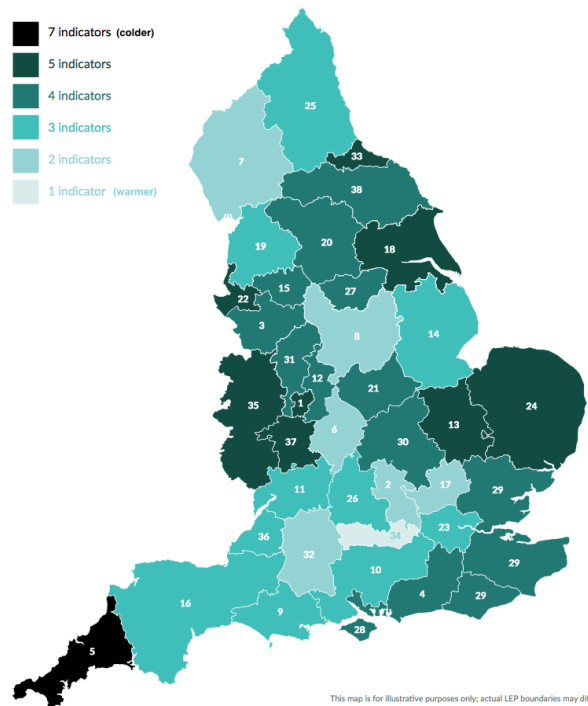
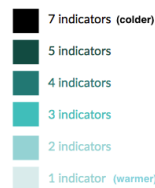


2. Back Proven Ideas



3. Find out What Works

The Cold Spots Prioritisation Indicators allow us to understand where more career support is needed and to direct our resources towards these areas. We hope that this will also guide the activities of others in this space. This is one of many research strands we pursue.



The Local Enterprise Partnership

Hertford and Stortford is in/near:	Hertfordshire LEP	CEC Regional Lead	Kerry Senatore
LEP Chair	Mark Bretton	Contact Details	KSenatore
LEP CEO	Neil Hayes		@careersandenterprise.co.uk
Enterprise Coordinators	5		0749 425 9034

1. Build a National Network

Schools and Colleges in Hertford and Stortford

School/College	Type	Part of EAN
St Mary's Catholic School	Voluntary Aided School	Yes
Amwell View School	Community Special School	Yes
Hockerill Anglo-European College	Academy Converter	Yes
Birchwood High School	Academy Converter	Yes
Presdales School	Academy Converter	Yes
The Sele School	Academy Converter	Yes
Richard Hale School	Academy Converter	Yes
Simon Balle All-Through School	Academy Converter	Yes
The Hertfordshire & Essex High School and Science College	Academy Converter	Yes
Pinewood School	Academy Special Converter	Yes
The Bishop's Stortford High School	Foundation School	Not yet
Middleton School	Community Special School	Not yet
Hertford Regional College	Further Education	Not yet
St Elizabeth's College (The Congregation of the Daughters)	Special Post 16 Institution	Not yet
The Chauncy School	Academy Converter	Not yet
Leventhorpe	Academy Converter	Not yet

Source: Department for Education, Edubase, June 2017. Some data may be incomplete.

2. Back Proven Ideas

Nationally or regionally funded programmes active in Hertfordshire LEP:

Find A Future Founders4Schools Hertfordshire County Council	YCH / Hertfordshire County Council
---	------------------------------------

3. Find out What Works

The Cold Spots show where more career support is needed. They are composed of multiple indicators. If the score of an indicator falls within the bottom third, it is considered cold on that indicator.

Legend	% claiming Free School Meals	% attaining A* - C GCSEs	% of STEM A-levels	% of STEM A-levels by girls	% in app/ship post KS4	% 16-17 year olds NEET	% Empl/ers work experience	% Empl/ers work inspiration	% Empl/ers say 16 year olds poorly prepared	% Empl/ers say new 17-18yo recruits poorly prepared				
<table border="1"> <tr><td>Top third</td></tr> <tr><td>Middle third</td></tr> <tr><td>Bottom third</td></tr> </table>	Top third	Middle third	Bottom third	England	13%	57%	29%	43%	5%	6%	38%	18%	36%	29%
Top third														
Middle third														
Bottom third														
	Hertfordshire LEP	7%	65%	30%	41%	3%	7%	36%	20%	29%	21%			

Contact us for more information: info@careersandenterprise.co.uk